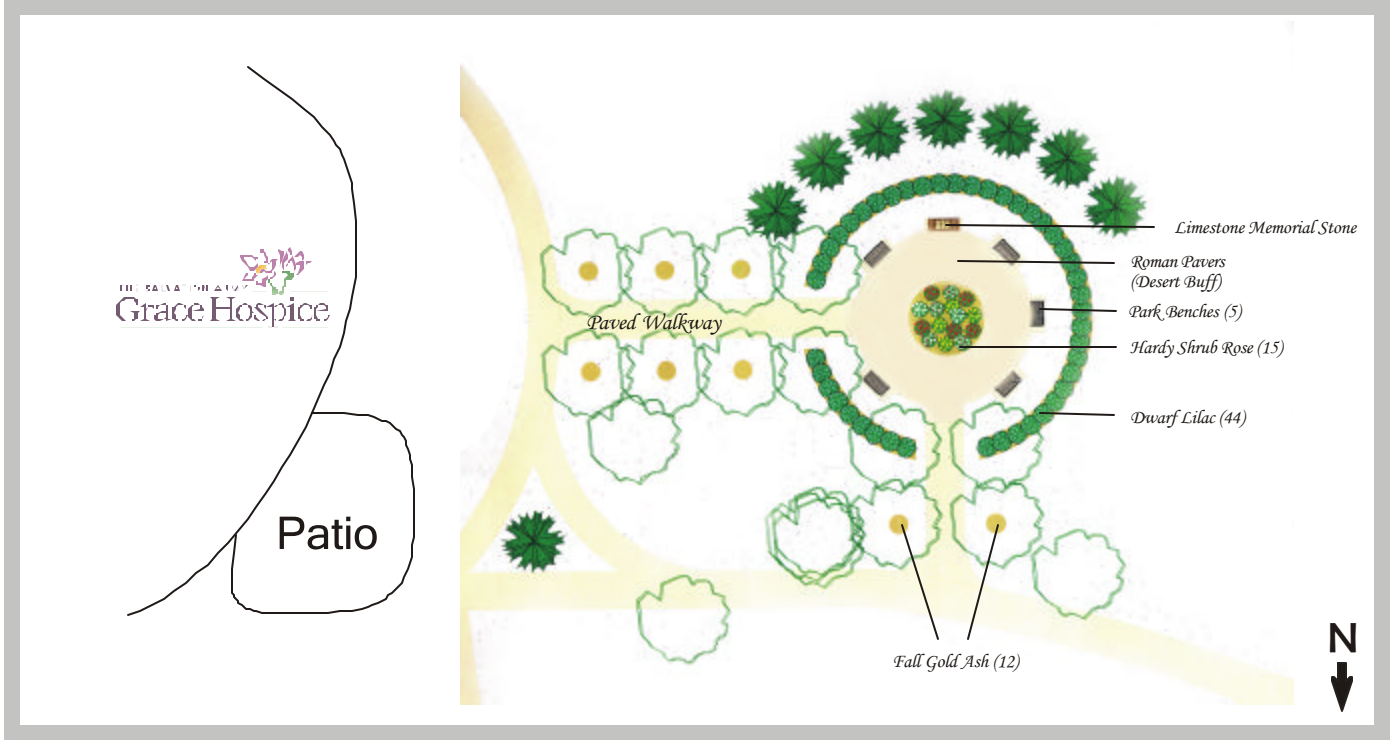




THE MEMORY GARDEN AT GRACE HOSPICE

Peace, Tranquility & Cherished Memories

In spring 2006, Grace Hospital Foundation will begin the construction of a “Memory Garden” attached to Grace Hospice. The Garden will provide a tranquil setting for residents of the Hospice and families to enjoy the beauty of nature, and to reflect on the cherished memories of loved ones.



The Garden will feature beautiful lilacs, Fall Golden Ash Trees and rose shrubs. It will be accessible from the Hospice through wheel-chair friendly, paved pathways. The Garden will also provide loved ones with special opportunities to memorialize family members.

- | | |
|----------------|---|
| \$1,000 | Name Recognition on the Memorial Stone |
| \$5,000 | Bronze Plaque on Garden Tree |
| \$7,500 | Bronze Plaque on Garden Bench |

All proceeds from your tax-deductible gift to the Memory Garden will be used in support of patient care enhancements at Grace Hospice. Please call Jon Einarson at Grace Hospital Foundation, 837-0488 for further information on the Memory Garden.

